

Chengdu's European connections

The world's fastest Sino-European freight train, more business ties

By LI YU and PENG CHAO
in Chengdu

As the regional transportation hub and one of the major growth engines in western China, Chengdu is now looking to Europe for more business, trade and cultural exchanges.

It is also a vision shared by Milan Hovorka, deputy minister of industry and trade of Czech Republic.

"I have a dream that one day I could travel around on airplanes jointly made by the Czechs and Chinese, so as to save the time for the beautiful scenes and tasty food in Sichuan," he told the EU-China Business and Technology Cooperation Fair last year.

As the Czech Republic seeks cooperation in the general aviation industry, a delegation led by President Milos Zeman will bring four types of light aircraft to this year's EU-China fair.

The ninth EU-China Business and Technology Cooperation Fair will be held in the capital city of Sichuan province from Oct 21 to 23, drawing more than 500 delegates from 25 EU countries.

One of the largest investment, trade and technology cooperation venues between China and EU, the fair will focus on energy-saving technologies, new materials, modern agriculture, general aviation, biopharmaceuticals, IT, and advanced manufacturing.

Witold Stepienn, head of the delegation from Lodz in Poland, will again lead a delegation to the fair. The Lodz delegation is scheduled to sign an agreement with Sichuan province for deeper cooperation.

Lodz is the terminus of the Chengdu-Europe express, the fastest and most frequently used direct freight train linking China and Europe.

Started last year, the rail service



We expect Lodz to become the gateway for Europe to enter China, and Chengdu the gateway for China to enter Europe."

WITOLD STEPIENN
HEAD OF DELEGATION
LODZ, POLAND

runs almost directly along parts of the legendary Silk Road. Cargo from Chengdu and around the country on the weekly train includes laptops produced by PC giant Dell and iPads by Apple, as well as auto parts, home appliances, clothing, shoes and toys.

It takes 14 days to ship the cargo from Chengdu to Lodz. Then within three days, the shipments are delivered to customers in London, Paris, Berlin and Rome over the widespread European rail and road network.

The Chengdu government plans to shorten the train's travel time to 12 days and increase the frequency to twice a week during peak season. A return route is also expected to go into service by the end of the year.

"The express train has strengthened ties between Lodz and Chengdu, and provides economic and trade opportunities for China and Europe," said Stepienn.

"We expect Lodz to become the gateway for Europe to enter China, and Chengdu the gateway for China to enter Europe," he said.

Chengdu's large airport and frequent international flights also tighten links with Europe.

In 2006 the city's first direct air

route to Europe began with a non-stop flight by KLM Royal Dutch Airlines to Amsterdam. It was also the first direct air route from China's central and western region to Europe.

Dozens of international flights have since followed.

Chengdu Shuangliu International Airport, the fourth-busiest airport on the Chinese mainland, now has 74 international routes connecting to cities including London, San Francisco, Melbourne, and Abu Dhabi.

New routes to Moscow, Paris, Dubai, and African cities are also expected to be scheduled.

Stronger connections to Europe are not only in transport.

In August, a group of "Ambassadors" aged between 5 to 15 in Germany and Switzerland collected colored drawings for 51, an 8-year-old panda named for its low birth weight. The Chengdu government honored it as the city's logo, echoing the Berlin Bear.

Pictures of 51 served as the mascot for a Chinese film convention at the 71st Venice International Film Festival in Italy.

On July 25, the Chengdu Bureau of Exposition signed a cooperation agreement with Italy's Fiera Roma exhibition company following its partnership with other world-renowned exhibition companies including German's Koelnmesse, and Britain's UBM and Reed Exhibitions.

Chengdu has been one of the top destinations in China for global events including the Fortune Global Forum and the World Chinese Entrepreneurs Convention.

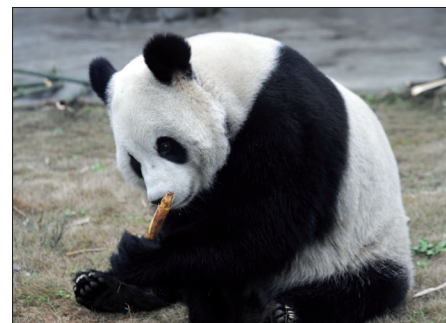
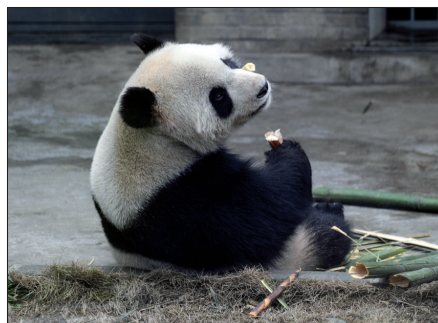
On Feb 23, the giant pandas Xinghui and Haohao arrived in Brussels, Belgium for a 15-year-long international research cooperation program through shipping services provided by a branch of DHL in Chengdu.

Late in 2013, Sheme, a woman's shoe brand from Chengdu, debuted its shoe collection Butterfly and Blossoms at London Fashion Week. It



PENG CHAO / CHINA DAILY

Business representatives from Europe and China discuss cooperation during the eighth EU-China fair held in Chengdu last October.



HE HAIYANG / FOR CHINA DAILY

Pandas Xinghui (left) and Haohao are now in Brussels for an international research program.

was the first-ever Chinese footwear brand at the London show.

Shoes manufactured in Chengdu have been exported to major markets in Europe including Italy, Russia and Britain.

Sichuan Tianfu new area, which is mainly located in Chengdu, was recently approved by the State Council as a national-level development zone. It is supposed to be another

engine of the Chengdu-Chongqing economic zone, and develop into a modern international city as the Shanghai Pudong new area, Tianjin Binhai new area and the Chongqing Liangjiang new area.

"Driven by the new round of the 'Go West' campaign and the national strategy to develop the Silk Road Economic Belt and Yangtze River Economic Zone, Chengdu is regain-

ing the glory as the starting point of the southern Silk Road," said Huang Xinchu, Party chief of Chengdu.

The city was one of the most prosperous trading hubs between China and the West, as described in the Travels of Marco Polo, the story of the 13th century Italian traveler.

Contact the writers at liyu@china-daily.com.cn



Joanna Real Estate

One of the Largest Real Estate Agencies in China

Hotline: +86 (10) 8458 5667 / 5267 139 1115 3118

E-mail: sales@joannarealestate.com.cn

Website: beijing.joannarealestate.com.cn

Villas for Rent in Beijing

Airport Expressway Area Chateau Regalia 4Br. 324sqm ¥ 33,000 4+1Br. 470sqm ¥ 40,000 Dynasty Garden 5Br. F 420sqm ¥ 35,000 5Br. H 600sqm ¥ 45,000 4Br. H 700sqm ¥ 50,000 Rits Garden 4Br. 400sqm ¥ 40,000 4Br. H 550sqm ¥ 48,000	Australian Garden 4Br. 350/400sqm ¥ 33,000 4Br. 500sqm ¥ 35,000 LA GRANDE VILLA 4Br. 270sqm ¥ 20,000 4Br. 380sqm ¥ 33,000 Jing Shun Road Close to WAB Beijing Riviera 4Br. A 402sqm ¥ 48,000 4Br. B 405sqm ¥ 48,000	4+1Br. C 294sqm ¥ 40,000 3Br. D 251sqm ¥ 32,000 Lane Bridge Villa 4Br. 375sqm ¥ 36,000 6Br. 430sqm ¥ 48,000 Orchid Garden 4Br. 275sqm ¥ 29,000 4Br. 310sqm ¥ 32,000 4Br. 400sqm ¥ 36,000 Grand Hills 4Br. C 502sqm ¥ 55,000	4Br. N 558sqm ¥ 65,000 6Br. J 800sqm ¥ 120,000 Quan Fa Garden 4Br. 280sqm ¥ 25,000 5Br. 650sqm ¥ 30,000 Jing Shun Road Close to ISB Yosemite 4Br. B1 498sqm ¥ 48,000 4Br. B4 564sqm ¥ 60,000 4Br. B3 596sqm ¥ 62,000 4Br. C2 389sqm ¥ 40,000	4Br. C9 356sqm ¥ 38,000 Beijing Eurovillage 4Br. 280sqm ¥ 28,000 4Br. 400sqm ¥ 30,000 Le Leman Lake Villa 4Br. A 682sqm ¥ 50,000 4Br. B 578sqm ¥ 45,000 4Br. C 516sqm ¥ 40,000 3Br. E 315sqm ¥ 20,000 Capital Paradise 3Br. 150sqm ¥ 12,000	3Br. 162sqm ¥ 16,000 4Br. 229sqm ¥ 23,000 River Garden Villa 3Br. A 250sqm ¥ 30,000 4Br. C 300sqm ¥ 33,000 5Br. F 400sqm ¥ 48,000 Dragon Bay Villa 4Br. 300sqm ¥ 25,000 4Br. 450sqm ¥ 38,000 4Br. 550sqm ¥ 50,000	Rose and Ginkgo Villas 4Br. 350sqm ¥ 36,000 4Br. 475sqm ¥ 50,000 Courtyards for Rent Houhai Courtyard 4Br. 320sqm ¥ 60,000 Gulou Courtyards 3Br. 230sqm ¥ 30,000 Wangfujing Courtyard 4Br. 320sqm ¥ 35,000
--	---	--	---	--	--	--



Beijing Riviera (C) - 香江花园
• ID: 41189 320sqm, 4Br. 4Ba. ¥ 50,000
• detached, big garden, big terrace, floor heating



Yosemite (C9) - 优山美地
• ID: 20320 358sqm, 4Br. 3Ba. ¥ 38,000
• townhouse, big garden, big balcony, big terrace



Lane Bridge Villa (I) - 长岛澜桥
• ID: 15752 380sqm, 4Br. 3Ba. ¥ 40,000
• semi-detached, big garden, big balcony



River Garden Villa (III, C) - 裕京花园
• ID: 03913 280sqm, 4Br. 3Ba. ¥ 35,000
• detached, big garden, sunroom



Dragon Bay Villa - 龙湖别墅
• ID: 03043 380sqm, 4Br. 3Ba. ¥ 33,000
• detached, big garden, big balcony, open kitchen



Rose and Ginkgo (I) - 龙湖抛洒山
• ID: 21200 340sqm, 4Br. 3Ba. ¥ 32,000
• corner house, big garden, open kitchen



Capital Paradise (I) - 名都园
• ID: 00881 230sqm, 4Br. 4Ba. ¥ 18,000
• townhouse, nice balcony, value for money

Apartments for Rent in Beijing

CBD Area Central Park (I - II) 2Br. 138sqm ¥ 18,000 3Br. 148sqm ¥ 23,000 3Br. 199sqm ¥ 28,000 4Br. 265sqm ¥ 43,000 4Br. 465sqm ¥ 90,000 Central Park (III) 2Br. 140sqm ¥ 20,000 3+1Br. 171sqm ¥ 28,000 3Br. 188sqm ¥ 28,000 3+1Br. 220sqm ¥ 38,000 Central Park (IV) 2Br. 138sqm ¥ 20,000	3Br. 188sqm ¥ 31,000 4Br. 264sqm ¥ 42,000 4Br. 286sqm ¥ 45,000 Global Trade Mansion 2Br. 171sqm ¥ 18,000 3Br. 180sqm ¥ 20,000 3Br. 256sqm ¥ 25,000 Fortune Plaza 2Br. 138sqm ¥ 13,000 2Br. 166sqm ¥ 15,000 3Br. 205sqm ¥ 19,000 3Br. 253sqm ¥ 28,000 CBD Private Castle 2Br. 150sqm ¥ 14,000	3Br. 170sqm ¥ 18,000 3Br. 230sqm ¥ 26,000 Xanadu Apartment 1+1Br. 110sqm ¥ 14,000 2+1Br. 175sqm ¥ 24,000 China Center Place 2Br. 135sqm ¥ 13,000 3Br. 213sqm ¥ 20,000 Gemdale Int'l Garden 2Br. 112sqm ¥ 15,000 3Br. 200sqm ¥ 23,000 Sanlitun Area GuangCai Int'l Apartment 3Br. 217sqm ¥ 22,000	4Br. 270sqm ¥ 32,000 SanlitunSOHO 2Br. 154sqm ¥ 19,000 3Br. 182sqm ¥ 23,000 3+1Br. 249sqm ¥ 31,000 Shimao Int'l Center studio78sqm ¥ 11,000 1Br. 107sqm ¥ 15,000 1+1Br. 136sqm ¥ 21,000 Joy court 1Br. 129sqm ¥ 14,000 3Br. 192sqm ¥ 28,000 Lido Area Upper East Side 2Br. 150sqm ¥ 15,000 3Br. 185sqm ¥ 15,000 4Br. 210sqm ¥ 24,000 4Br. 280sqm ¥ 28,000 Upper East Side - Binhe 3Br. 206sqm ¥ 25,000 5Br. 390sqm ¥ 42,000 Upper East Side - Andersen 2Br. 150sqm ¥ 19,000 3Br. 234sqm ¥ 28,000 4Br. 288sqm ¥ 33,000 Richmond Park 2Br. 120sqm ¥ 12,000 3Br. 188sqm ¥ 16,000	3Br. 240sqm ¥ 33,000 4Br. 324sqm ¥ 43,000 Lido Serenity City 2Br. 112sqm ¥ 12,000 3Br. 170sqm ¥ 19,000 4Br. 220sqm ¥ 33,000 Lufthansa Area United Apartment 2Br. 166sqm ¥ 18,000 3Br. 196sqm ¥ 20,000 4Br. 226sqm ¥ 22,000 Chevalier 3+1Br. 220sqm ¥ 22,000 4Br. 296sqm ¥ 31,000	Mixion Residence 1Br. 131sqm ¥ 14,000 3Br. 180sqm ¥ 23,000 3Br. 205sqm ¥ 26,000 3Br. 254sqm ¥ 32,000 Four Seasons 2+1Br. 265sqm ¥ 46,000 3Br. 350sqm ¥ 53,000 Beijing SOHO Residences 2+1Br. 234sqm ¥ 25,000 2+1Br. 290sqm ¥ 35,000 Dongzhimen Area Seasons Park 2Br. 128sqm ¥ 13,000	3Br. 150sqm ¥ 17,000 4Br. 250sqm ¥ 35,000 MOMA - MOMA 2Br. 142sqm ¥ 16,000 3Br. 245sqm ¥ 25,000 4Br. 305sqm ¥ 32,000 POP MOMA 2+1Br. 171sqm ¥ 22,000 3Br. 205sqm ¥ 25,000 Chaoyang Park Area Greentake Place 3Br. 180sqm ¥ 16,000 4Br. 260sqm ¥ 28,000 4Br. 298sqm ¥ 30,000	Palm Springs 2Br. 138sqm ¥ 15,000 3Br. 180sqm ¥ 23,000 3Br. 220sqm ¥ 28,000 4Br. 370sqm ¥ 45,000 Park Avenue 2Br. 173sqm ¥ 19,000 3Br. 173sqm ¥ 23,000 3Br. 210sqm ¥ 30,000 3Br. 250sqm ¥ 33,000 4Br. 290sqm ¥ 41,000 4Br. 370sqm ¥ 48,000 4Br. 650sqm ¥ 120,000 Oceanwide Int'l	3Br. 199sqm ¥ 20,000 4Br. 250sqm ¥ 30,000 Beijing Golf Palace 3Br. 270sqm ¥ 33,000 4Br. 310sqm ¥ 55,000 Boya Garden 2Br. 130sqm ¥ 12,000 3Br. 170sqm ¥ 15,000 4Br. 228sqm ¥ 21,000 Park Apartment 3+1Br. 245sqm ¥ 31,000 3+1Br. 265sqm ¥ 34,000 Parkview Tower 4Br. 300sqm ¥ 33,000
---	--	--	--	---	---	--	--	--



Beijing Yintai Centre - 北京银泰中心
• ID: 40549 132sqm, 1Br. 1Ba. ¥ 24,000
• middle floor, good view, open kitchen



Palm Springs - 棕榈泉
• ID: 04633 190sqm, 3Br. 2Ba. ¥ 22,000
• garden view, value for money, arc bay windows



Park Avenue - 公园大道
• ID: 04651 250sqm, 3+1Br. 3Ba. ¥ 31,000
• high floor, garden view, value for money



Chevalier - 赛马都
• ID: 22649 450sqm, 5+1Br. 5Ba. ¥ 51,000
• duplex, south facing, big balcony, nice garden



Central Park (IV) - 新城国际
• ID: 05753 270sqm, 3Br. 2Ba. ¥ 18,000
• high floor, good view, big balcony



Beijing Golf Palace - 北京高尔夫公寓
• ID: 05753 270sqm, 3Br. 2Ba. ¥ 33,000
• middle floor, garden view, big balcony



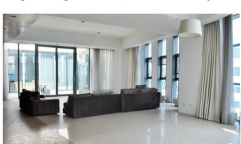
Genertime Int'l Center - 通用国际中心
• ID: 38082 345sqm, 4+1Br. 3Ba. ¥ 40,000
• high floor, garden view, open kitchen



Beijing SOHO Residences - 北京SOHO公馆
• ID: 39218 200sqm, 3Br. 2Ba. ¥ 31,000
• high floor, good view, big balcony, big terrace



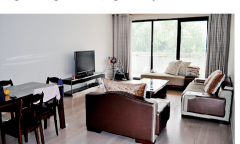
Chateau Regency - 和乔丽晶
• ID: 40527 270sqm, 3+1Br. 3Ba. ¥ 34,000
• south facing, garden view, nice balcony



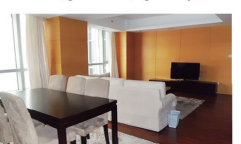
SanlitunSOHO - 三里屯SOHO
• ID: 40875 493sqm, 3+1Br. 3Ba. ¥ 73,000
• penthouse, open kitchen, big terrace



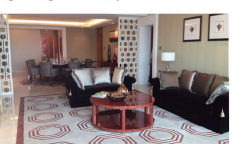
Upper East Side - 阳光上东
• ID: 41172 260sqm, 3+1Br. 3Ba. ¥ 28,000
• high floor, good view, good sunlight



Victoria Gardens - 维多利亚花园
• ID: 02108 196sqm, 3Br. 2Ba. ¥ 18,000
• south facing, big balcony, floor heating



Fortune Heights - 财富中心
• ID: 22655 264sqm, 3Br. 3Ba. ¥ 36,000
• high floor, good view, open kitchen

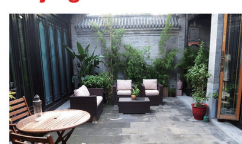


Four Seasons - 四季世家
• ID: 40908 320sqm, 3Br. 3Ba. ¥ 55,000
• high floor, garden view, floor heating

Courtyards for Rent in Beijing



Dongsi Courtyard
ID: 41181 260sqm 3Br. 2Ba. ¥ 35,000
beautiful yard, nice terrace



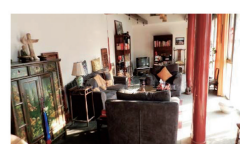
Beixinqiao Courtyard
ID: 13675 220sqm 2+1Br. 2Ba. ¥ 49,000
big yard, quiet environment



Gulou Courtyard
ID: 41126 240sqm 2Br. 2Ba. ¥ 38,000
with beautiful yard and terrace, floor heating



Qianmen Courtyard
ID: 40866 350sqm 9Br. 1Ba. ¥ 45,000
big yard, quiet environment



Houhai Courtyard
ID: 02930 415sqm 4+1Br. 4Ba. ¥ 75,000
big yard, floor heating

JRE面向业主主推“物业委托服务”。我们不但为业主提供家居装修翻新服务、家具租赁服务、钥匙托管服务及保洁服务，还将保证在三个月内成功出租业主的物业。

咨询热线: 139 1115 3118

Please follow us on Wechat by scanning this QR Code!

