

## HOTELS

## Grand Skylight Hotel, Shenzhen

深圳格兰云天大酒店

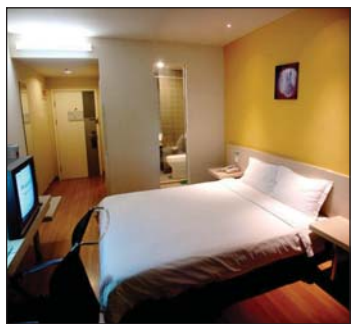


Grand Skylight Hotel, Shenzhen opened in 1989 and was renovated in 2000. Facing the verdant Zhongxin Park, it is located close to the noted Huaqiangbei commercial area and is within walking distance of the subway station. There are 255 rooms in the hotel, including standard rooms, deluxe rooms, administrative rooms, deluxe administrative rooms and suites. All the rooms are equipped with electronic locks; satellite TVs; mini bars; and 24-hour meal delivery service. Newly decorated rooms with elegant style and quality service reflect Grand Skylight Hotel's brand identity — exquisite and unique.

**Address:** No 3024 Central Shennan Road, Shenzhen

**Accepted payment:** MasterCard, Visa, Chinese yuan

## Motel 168 of Hongling Road, Shenzhen 莫泰168连锁酒店 (深圳红岭店)



Motel 168 of Hongling Road, Shenzhen is situated at the junction of Nigang West Road and Hongling North Road in Bagualing, Futian district. It is 35 minutes' drive from Shenzhen Bao'an Airport and 15 minutes' drive from the Lohu and Huanggang ports. Near the hotel is the Yinhu Bus Station to the north, the municipal committee building, Huaqiang and Dongmen commercial circles, Lohu and Huanggang ports are located to the south. To the west are Shenzhen International Exhibition Center, Shenzhen Indoor Stadium and Bijing Mountain Park. Opened in 2007, it has 420 guestrooms of various types. The motel offers Internet access, international and national call access, VODs, and laundry and cooking facilities.

**Address:** North Hongling Road, Futian district, Shenzhen

**Accepted payment:** MasterCard, Visa, Chinese yuan



## EDITOR'S PICK &gt;&gt; GOLF CLUBS

There are 15 golf clubs in Shenzhen. The Mission Hills Golf Club, the first 4A-rated tourist resort in China, has hosted the Golf World Cup annually since 2007 and will host it for the next eight years. Shenzhen Golf Club, Shenzhen Noble Merchant Golf Club and Sand River Golf Club are to the west of the city center, along Shennan Thoroughfare.

## Shanshui Trends Hotel (Luohu), Shenzhen

山水时尚酒店 (深圳罗湖店)

Shanshui Trends Hotel (Luohu), Shenzhen was opened in 2005 and decorated in 2006. It is located in the prosperous Shenzhen People South Business Circle, at the cross of train station and Luohu port. With convenient transportation, it is about five-minute's walk from the Luohu port and subway station. It is convenient to reach Dongmen Business Street, Huaqiang North Business Street, China Shenzhen Hi-tech Exhibition Fair and Shenzhen Bao'an Airport. The hotel offers 195 guestrooms. It has Xingyuanlai Cantonese Bar, Hong Kong Recreational Center, Shanshui Western Cuisine Bar, meeting rooms and the most professional and biggest Cantonese Opera Center on the mainland — Changhu Quyi Center. Shanshui Trends Hotel (Luohu),



Shenzhen offers all kinds of business services, including a business center, car rental, ticketing services, laundry, parking, shopping, and a massage and beauty salon.

**Address:** Changhu Building, No 1098, Yanhe Road, Luohu district, Shenzhen  
**Accepted payment:** MasterCard, Visa, Chinese Yuan

## ATTRACTIONS

## Shenzhen Safari Park

深圳市野生动物园

Shenzhen Safari Park is located in the north of Shenzhen, on the bank of the beautiful Xili Lake. The zoo hosts animals, plants and animal performances, and is the first to uncage animals in China. More than 300 species of animals live here. Many are rare. Pandas, giraffes, Asian elephants, red-crowned cranes, Siberian tigers and flamingos are found in this park.

With green mountains to the north as its barrier, the Safari Park is like a bright pearl in the bustling metropolis. The zoo, occupying 120 hectares, has three parts. Visitors can take buses to watch the animals strolling on the lawn.

In the Adventurous Beasts' Zone, white tigers (Bengal tigers), North China tigers (Siberian tigers), South China tigers, bears, wolves, lions and cheetahs can be found. A Chinese saying goes: "One mountain cannot have two tigers" but in the Chinese Liger Hill, tigers and lions coexist harmoniously. Here, visitors can find the only tiglon in the world



and rare ligers.

Giraffes, flamingos, zebras, kangaroos, camels, hippopotamuses, swans, pandas and other vegetarians inhabit the Herbivore Zone. This area has the largest swan lake in China. Visitors can float in boats on lake to appreciate the graceful swans. Pandas are also well worth viewing.

In the Animal Performance Zone, wonderful shows await visitors. The red orangutans, the closest animal to human beings, come from India. They even serve as salesmen, cooperating with the parrots as cashiers and the elephants as porters. Every day, the zoo holds about 10 performances in four halls. These are the Circus Hall, the Elephants and Tigers Show Hall,

the Sea Lion Performance Hall and the Birds Performance Hall. The grand "party" for hundreds of birds cannot be seen anywhere else. Another exciting performance, involving more than 300 human actors and about 1,000 animals, is also the only of this kind in the world. The elephants act as the leaders of the parade, with tigers, lions and other animals following behind and clouds of pigeons hovering above.

The Zoological Center is the largest in China. Visitors learn about the colorful animal world by viewing specimens and pictures, and using the multimedia touch screens.

**Hours:** 8:30 am-6:30 pm

**Transportation:** Take buses 101, 104, 240, 226, 361, 66 and 237.